

# Tower<sup>Protek</sup><sup>®</sup>

## Tall Fescue with Novel Endophyte



Tower<sup>Protek</sup> is a late maturing, soft and palatable tall fescue, inoculated with the *Protek*<sup>®</sup> endophyte to bring additional persistence to the plant. (USA Patent Application 61/692810)

Tower was developed in Southern France where high animal performance is needed, despite heat and droughty conditions. The goal was to develop a soft leaf tall fescue with high palatability and forage quality, yet not suffer from the lack of persistence or demonstrate the dry matter yield drag associated with other softer leaved fescues. Tower has proven to be successful in all the major tall fescue areas of the world. Enhanced with the *Protek* endophyte, Tower's adaptability to the transition zone is increased.

*Protek*<sup>®</sup> is a novel endophyte (*Neotyphodium coenophialum*), selected by DLF Trifolium, that does not produce detectable levels of harmful ergot alkaloids such as the toxic ergovaline. Tower<sup>Protek</sup> shares the same endophyte as in Martin 2<sup>Protek</sup>.

University Research has demonstrated the economic benefits of replacing toxic Kentucky 31 pastures with novel endophyte tall fescue. Calves have better weight gains, smoother hair coats and better performance when later placed in feed lots. Cows milk better and show increased conceptions rates. Bulls have higher semen quality.

Persistence of novel endophyte tall fescue equals Kentucky 31. *Protek*<sup>®</sup> endophyte inoculated plants exhibit improved tolerance to environmental stress.



PLOIDY  
Hexaploid (6N)

GROWTH HABIT  
Perennial Bunch

ESTAB. RATE  
10-14 days

NITROGEN REQ.  
High 80-100 lbs/ac

ANEROBIC SOIL TOL.  
Good

pH RANGE  
4.7-8.5

MINIMUM RAINFALL  
>20 inches

DRY MATTER YIELD  
6-8 tons

REGROWTH  
Excellent

PRIMARY UTILIZATION  
Grazing, hay & stockpile

VEG REPRO TIL RATE  
Strong

ENDOPHYTE  
Novel

SEEDING RATE  
15-25 lbs/ac pure stand

# Tower<sup>Protek</sup><sup>®</sup>

## Tall Fescue with Novel Endophyte



### The Tower<sup>Protek</sup> Advantage

Tower<sup>Protek</sup> is the latest maturing novel endophyte tall fescue in the market. The variety was selected for increased net energy and improved fiber digestibility. Due to its late maturity, Tower<sup>Protek</sup> will maintain high forage quality when grazing or harvesting is delayed.

Tower<sup>Protek</sup> is a soft, leafy and palatable tall fescue. It has a relatively fine texture and high tiller density, giving it good performance under intensive grazing.

Tower<sup>Protek</sup> is a new tool to increase grazing animal productivity in the transition zone.

New Zealand dairyman Stuart Taylor co-owns several NZ dairy farms, and was frustrated with the poor summer growth and persistence of ryegrass. After trialling tall fescues, Stuart is impressed with Tower<sup>Protek</sup>. "Farmers need to be aware that Tower<sup>Protek</sup> is a different technology to previous tall fescues. We have found milk production to be similar to, or better than ryegrass and it's easier to match pasture growth with cow demand."

Your Local Dealer:

### Tall Fescue Forage Yield Trial

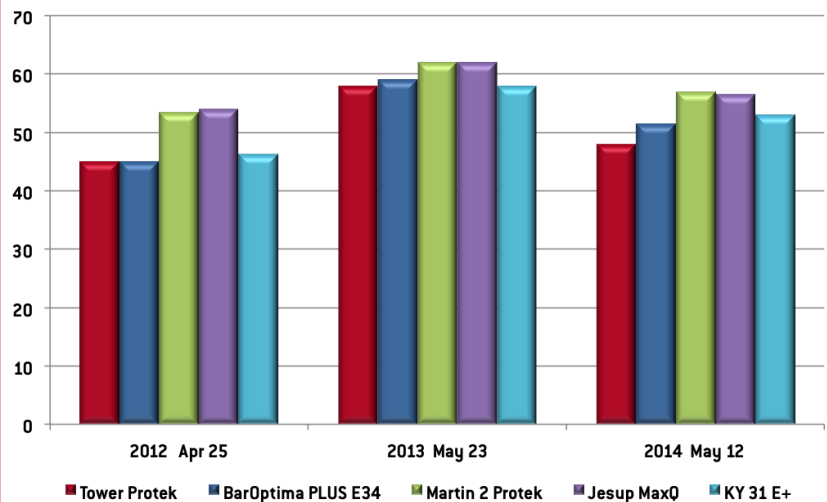
Lexington, KY [Sown 9/14/2011]

Variety	2012 Yield (tons)	2013 Yield (tons)	2014 Yield (tons)	3-Year Total (tons)
<b>Tower<sup>Protek</sup></b>	<b>3.07</b>	<b>4.93</b>	<b>2.73</b>	<b>10.72 *</b>
BarOptima PLUS E34	3.03	5.65	3	11.69 *
Martin 2 <sup>Protek</sup>	2.73	5.48	3.09	11.30 *
Jesup MaxQ	3.21	5.2	2.79	11.20 *
KY 31 E+	2.75	4.8	2.58	10.13
Kentucky 32	2.97	4.62	2.52	10.11
Hymark	2.58	4.66	2.73	9.97
mean	2.92	4.98	2.83	10.73
LSD [0.5]	0.54	0.67	0.54	1.42

\*Statistical top group

### Maturity at First Cut

(lower score is later maturity)



Source: Tall Fescue Forage Yield Trial, Lexington, KY sown 9/14/2011