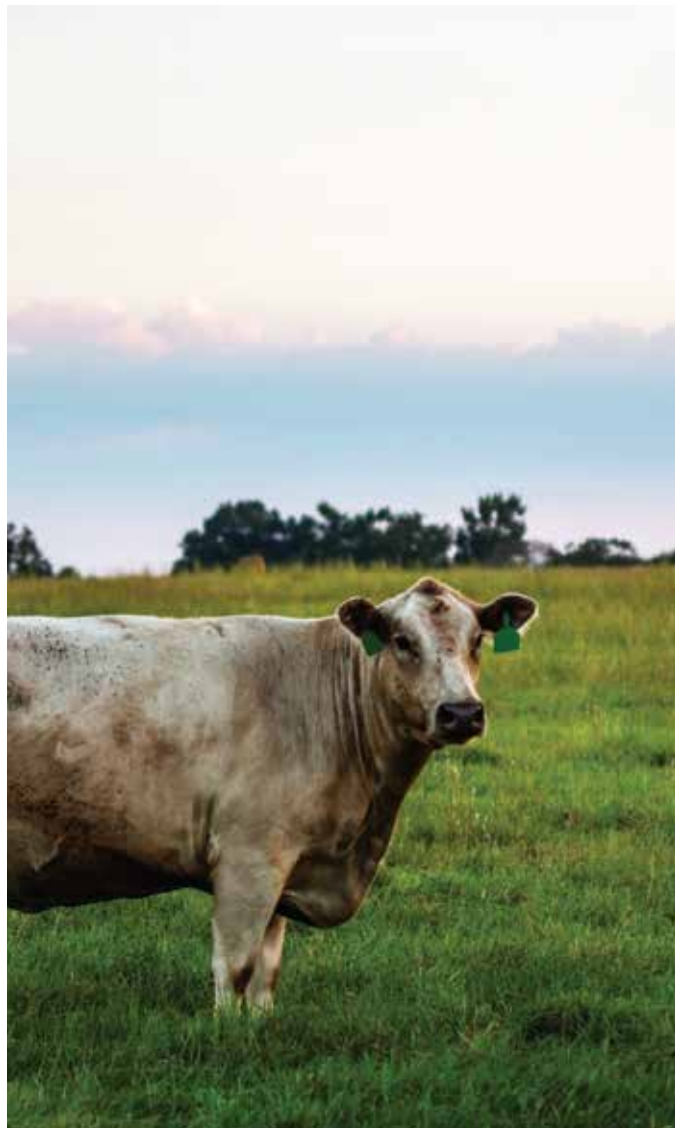


Greendale

Festuca arundinacea



Greendale is a forage tall fescue form DLF's K-generation, referring to DLF's Kentucky trial and selection research station. Selections were made in French and US lines for late maturity, vigor, spring growth, soft fine leaf texture, forage yield potential and freedom from diseases. Greendale is free of endophytes.



Key Features

- **High yield**
- **Late Maturity**
- **Soft and fine leaved, highly palatable**
- **Excellent disease resistance**
- **Good persistency**
- **Northern adaptation**

Greendale is well suited for grazing and hay mixtures. Good seedling vigor will allow quick establishment in mixtures with ryegrasses and/or festuloliums. It is well adapted from the transition zone up to the northern regions.

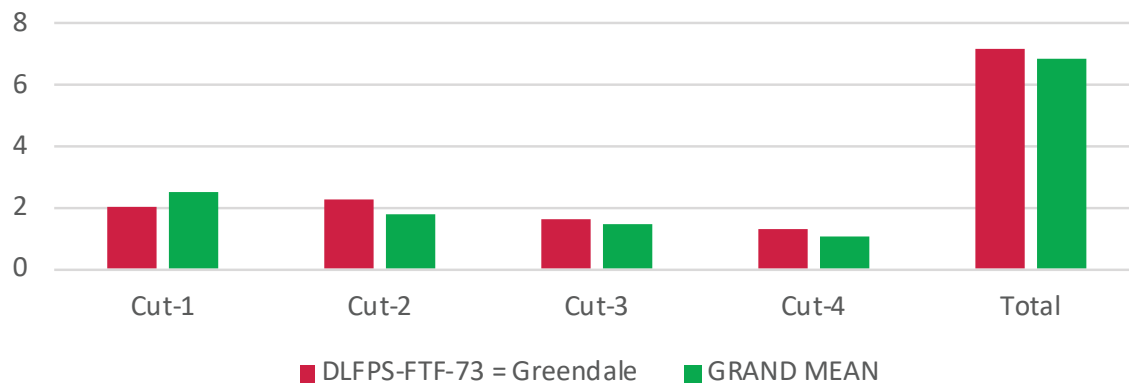
Greendale's high palatability allows for monoculture grazing, well matched for high performing livestock. In Penn State trials, Greendale topped the competition by a wide margin every year, yielding 1 ton DM/acre more than the second placed variety in the trial, 2 ton DM/acre higher than the trial average.

Greendale

Festuca arundinacea



Yield (T/A DM)2018
Penn State Univ., Rock Springs 2015-2018



Yield (T/A DM) 3 yrs
Penn State Univ., Rock Springs 2015-2018

